

Benefit from Retrofit Package 4.0

	<p>Creating Connectivity</p> <p>Industrial processes will go hand in hand in the future and traditionally separated worlds of customers, partners and suppliers will interact to form a new type of supply chain. A necessary prerequisite to do so is connectivity, i.e. the ability of networking in such supply chains. We equip or retrofit our customers' machines to lend them the necessary connectivity in order to be geared for the supply chain of the future.</p>
	<p>Flexible Manufacturing</p> <p>Due to the transparency of all processes companies can react to changes quickly and flexibly and improve production flows simply at all their locations.</p>
	<p>Predictive Maintenance</p> <p>A data-driven intelligent service system identifies the need for maintenance in advance and shows machine failure risks upfront. Sensors measure the wear of critical components and monitor the machinery in real time. This helps to identify the optimum time for maintenance and thus to avoid long downtimes and production stoppages.</p>
	<p>Competitiveness</p> <p>The increased networking of products and machines will enhance the efficiency of manufacturing companies. Setup times are optimized, reworking and reject costs are significantly reduced, capacities are optimally utilized.</p>
	<p>Innovative Business Models</p> <p>Intelligent objects collect a multitude of data. On this basis new business models and services will emerge, e.g. in the logistic chains.</p>

We offer you a unique combination of automation and IT expertise

As automation experts we know the requirements of our customers. We are specialists in SPS programming and all common control systems.

We have the hardware know how for generating the necessary data and possess profound database skills. With our partner SOLUNIO, the developer of an intelligent software for a dynamic data management having the required knowledge of analysis and mapping of manufacturing processes, we offer a complete package of software product, hardware and services.

softQare by SATEG

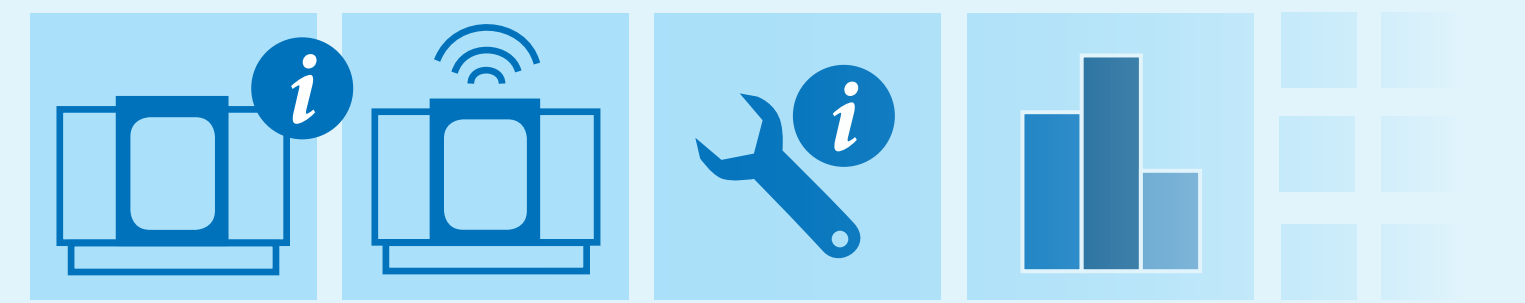
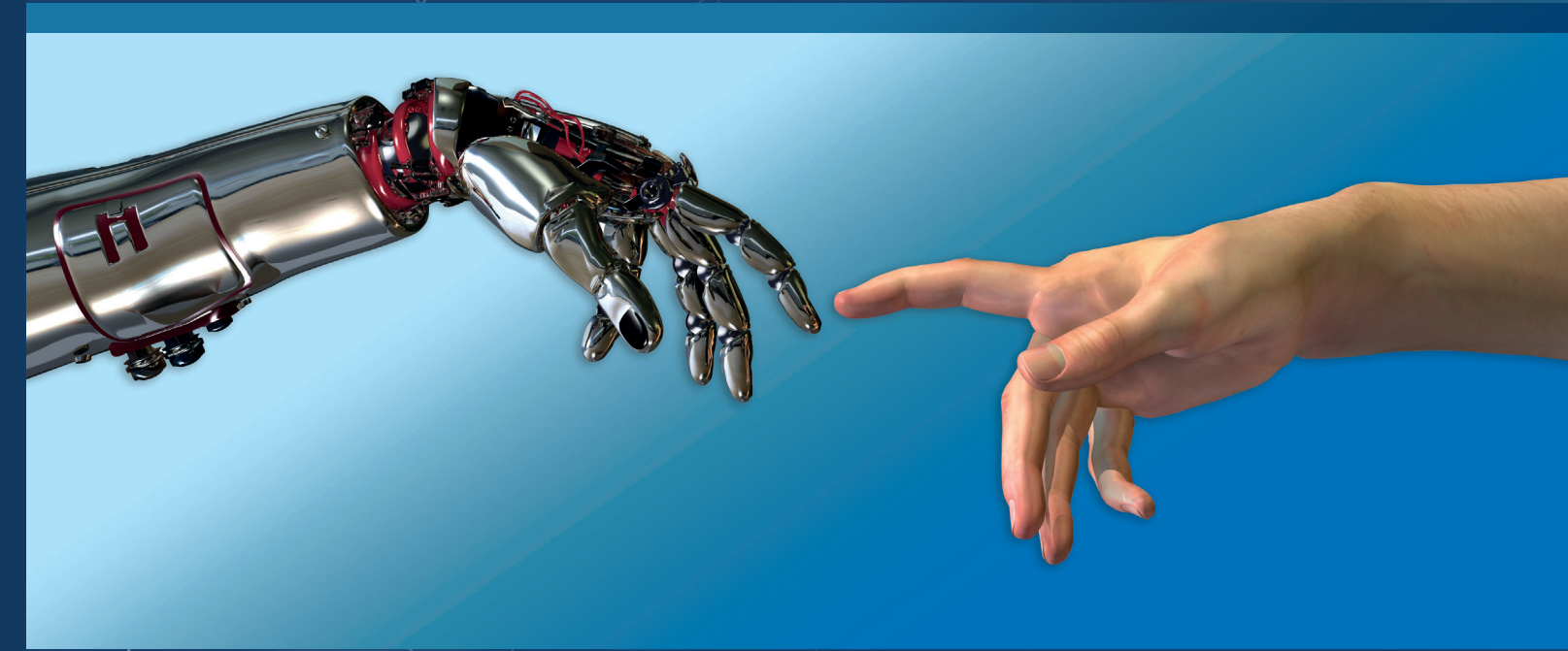
- ✓ Well-proven and widely used product
- ✓ Extremely cost-attractive compared to production data acquisition systems (BDE) and MES
- ✓ Easily deployed
- ✓ Short learning curve
- ✓ Delivering results within short time



SATEG GmbH
 Hans-Schardt-Straße 1 • D-66822 Lebach
 Phone: +49 (0) 68 81/9 24 92 - 0
 E-Mail: info@sateg.de



A brand of SATEG GmbH.
 Phone: +49 (0) 68 81/9 24 92 - 33
 E-Mail: info@softqare.de



Geared
 for the future

Retrofit Package 4.0

Optimizing performance by increasing transparency in production.

Efficient analysis and utilization of data.

In the era of digitalization and smart factories many different devices, including aged equipment, will communicate with each other in an unprecedented way. When it comes to development and digitalization of industrial processes many companies encounter problems regarding the utilization of the collected production data. Companies can often not use the collected data for optimizing their production since they are not available in a structured format.

With our Retrofit Package 4.0 we equip production systems in a way to ensure an optimum use of the received data and to make the data available at any time in a clear and customized format.

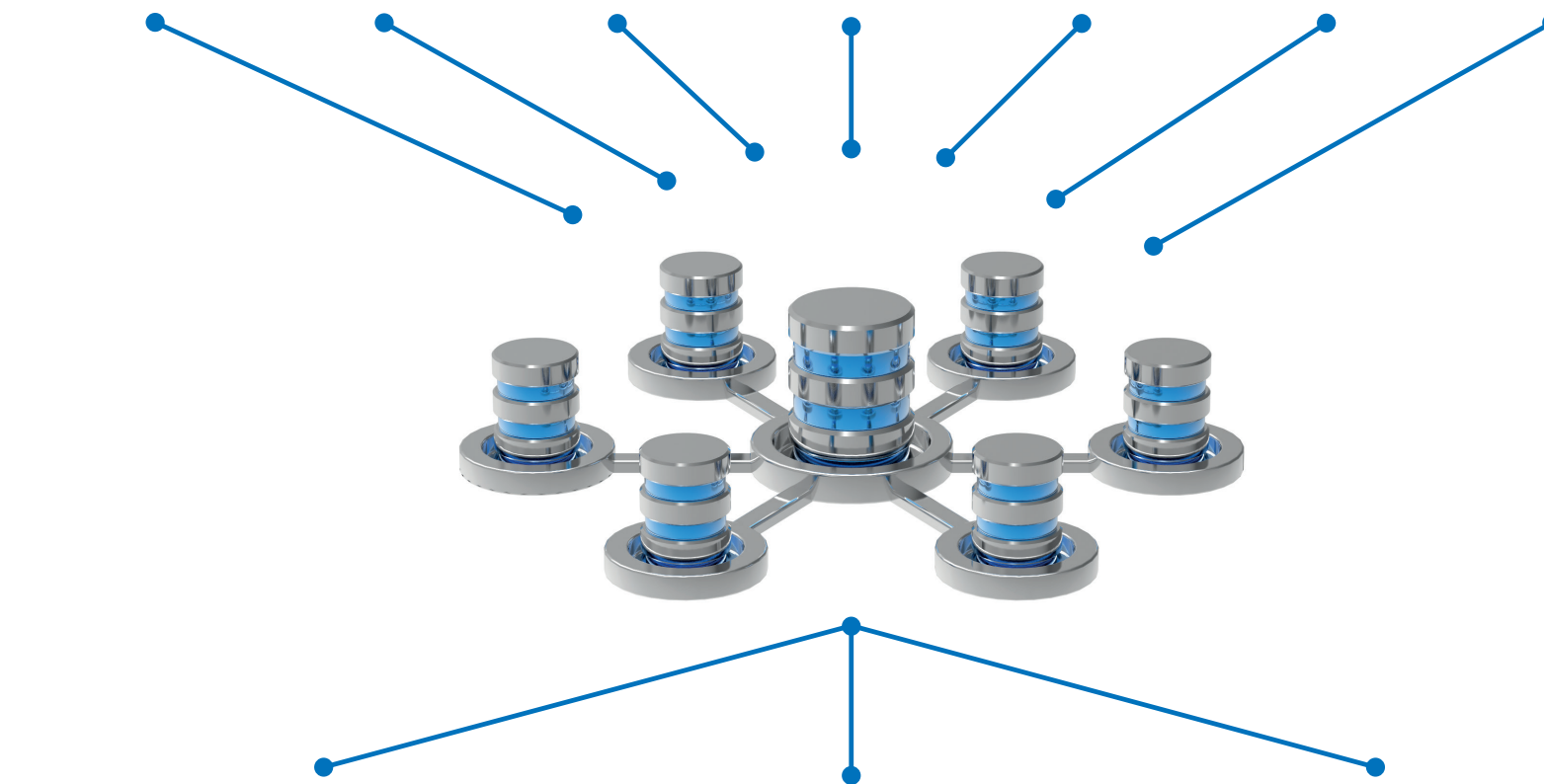


Relevant data are displayed directly on the shop floor on tablet PCs or PC screens.

GENERATING DATA



INITIATING A DATA BASE



USING DATA



Real time monitoring of processes and resources.



Always up-to-date KPIs and current analyses.



Providing the line efficiently with relevant information.

Companies generate production-related data in many different ways and often store them in various isolated systems and different formats. These data need to be captured and processed such that they are usable in a structured and meaningful manner.

By collecting, processing, analyzing and visualizing data from both new and old equipment companies are able to increase their efficiency and thus generate a competitive advantage.

Visual Shop Floor provides decision-makers at the right moment with relevant information. Plan deviations are recognized at an early stage, optimization potentials are identified and evaluated easily and efficiently.